

COVID-19

BE A RESPONSIBLE CITIZEN

Follow accurate public
health advice and avoid
spreading rumours



STOP THE SPREAD, WE CAN DO IT

Bernama Infographics

COVID-19

BE A RESPONSIBLE CITIZEN

- Be supportive
- Be careful
- Be alert
- Be kind
- Be ready to fight
COVID-19



STOP THE SPREAD, WE CAN DO IT

Bernama Infographics

RESTRICTION OF MOVEMENT ORDER

IMPLEMENTED UNDER THE PREVENTION & CONTROL OF INFECTIOUS DISEASES ACT 1988
& THE POLICE ACT 1967

IN EFFECT FROM MARCH 18 – 31

PROHIBITS:



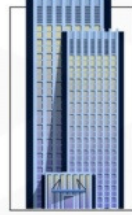
- The movement of persons & mass gatherings e.g. religious, sports, social & cultural
- All places of worship must close & halt activities including the Muslim Friday prayer
- All business premises except supermarkets, public markets, sundry & convenience shops must close



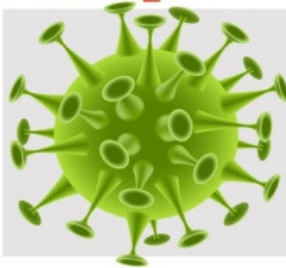
- Malaysians from going overseas
- Those returning from overseas must undergo a medical examination & self-quarantine for 14 days
- Foreign tourists/visitors banned from entering the country



- The operation of nurseries, government & private schools e.g. day schools, boarding schools, international schools, tahfiz centres & pre-university institutions
- Includes public & private higher education institutions, as well as skills training centres



- The operation of non-essential public & private premises
- Essential services like water, electricity, telecommunications, postal, transportation, irrigation, oil, gas, fuel, lubricants, broadcasting, finance, banking, health, pharmacies, the fire brigade, prisons, ports, airports, security & defences, cleaning, retail & food supplies allowed to remain open



- Drastic immediate action is required to stop the spread of COVID-19
- For more information on the restriction of movement order, call the National Operation Management Centre hotline at 03-8888 2010 when it opens from noon on March 17
- Everyone in Malaysia must comply with the order

Source: Prime Minister's Office

Bernama Infographics

MOVEMENT CONTROL ORDER

NATIONAL WATER SERVICES COMMISSION (SPAN)

OPERATIONAL



Operations & maintenance of water supply system



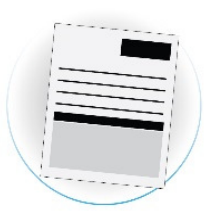
Operations & maintenance offices (customers not advised to visit)



Complaint channels: telephone, online, phone apps



Report to SPAN www.span.gov.my



Bill payment (refer to state operator)



24-hour water quality monitoring



Water quality test (every 2 hours)



No rebate / subsidy

Source: Ministry of Water, Energy & Natural Resources

Published: 25/3/2020
Bernama Infographics

#COVID-19 JARGON: WHAT YOU SHOULD KNOW

World Health Organisation came up with the term COVID-19 for the novel coronavirus on Feb 11

CO **VI** **D** **-19**

Corona Virus Disease 2019

A virus that causes respiratory disease in animals & humans



OUTBREAK

The occurrence of disease cases in excess of normal expectancy

EPIDEMIC

Affecting or tending to affect a disproportionately large number of individuals within a population, community, or region at the same time

PANDEMIC

An outbreak of a disease that occurs over a wide geographic area and affects an exceptionally high proportion of the population

SYMPTOMS

Indications of the disease

ASYMPTOMATIC

Showing no signs of the disease

SYMPTOMATIC

Showing signs of disease

Incubation Period

The time from the moment of exposure to the virus until signs or symptoms of the disease appear

Close Contact

A person at risk of being infected (being within one metre of an infected person who sneezes or coughs)

Social Distancing

Staying apart from each other, at least one metre, or, as some countries are recommending, two metres

Chain of Infection

The spread of the disease

Isolation

Separation of sick people from people who are not sick

Quarantine

Separation and restriction of movement of people who were exposed to the disease to see if they become sick

Contact Tracing

Process of identification of the people (close contacts) who may have come into contact with the infected person

Cluster

A source where the infection originated

Flattening the Curve

To keep the daily number of cases at a manageable level

Exponential Spike

A rate of increase that becomes quicker as the disease infects more people

Movement Control Order

Government's measure to slow, & eventually stop, the spread of the disease

